



MIDSOUTH
forestry services

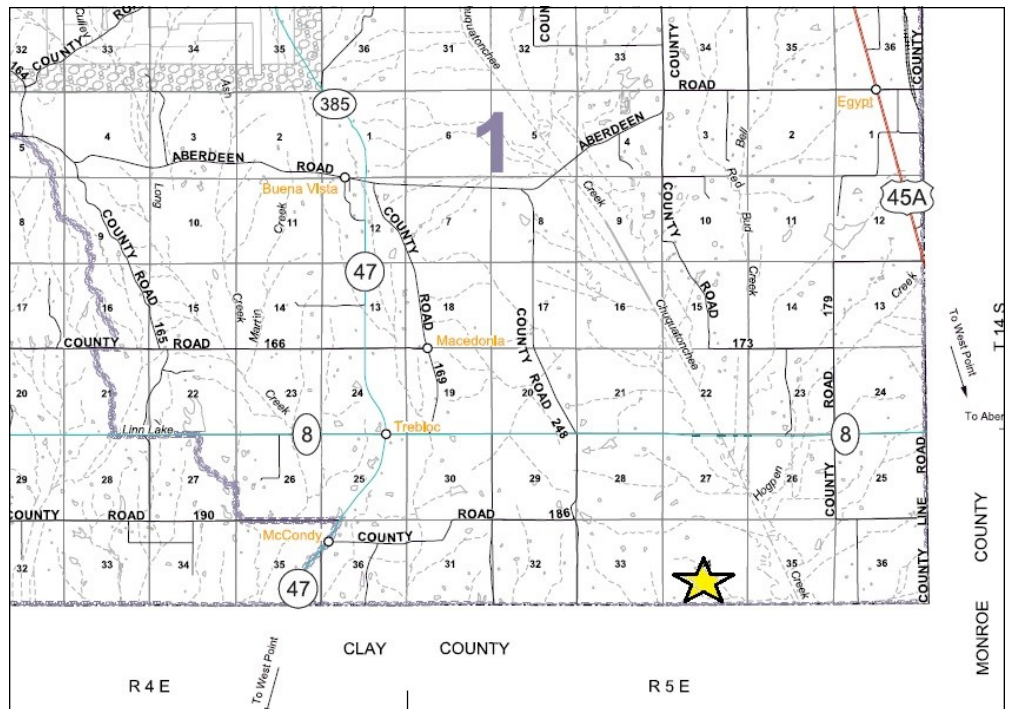
P. O. Box 600
Gordo, AL 35466
205-364-7145

Old Henry Tract
Chickasaw County, MS
+/- 240.87 Acres
Timberland / Hunting / Recreation
\$361,305.00

Section 34, Township 14 South, Range 5 East
33.8148, -88.7700

For more info: www.midsouthforestryservices.com

280.87 +/- acres timberland on County Line Road in southeast Chickasaw County, MS, along the Clay County line. Conveniently located, the tract is only 16 miles away from Aberdeen, MS, with Houston, MS being 17 miles away. With 57.2 +/- acres bottomland hardwood, this tract contains the perfect habitat for various game species – this area is known for its excellent deer and turkey hunting. This tract is also great for timber investment with future income possible from the 34.8 +/- acres of 12 year old pine plantation and 147.2 +/- acres recently reforested. Frontage on paved County Line Road (CR 183), as well as a good interior road system, makes this tract easily accessible.



All information furnished is assumed to be accurate and correct. However, neither the property owner nor Midsouth Forestry Services warrant the accuracy of information furnished. Prospective buyers should satisfy themselves as to the accuracy of this information. No representation or warranties are expressed or implied as to the property, its condition, boundaries, access, acres, zoning, condition of title or fair market value.